

SITE OF PLAN OF PLOT

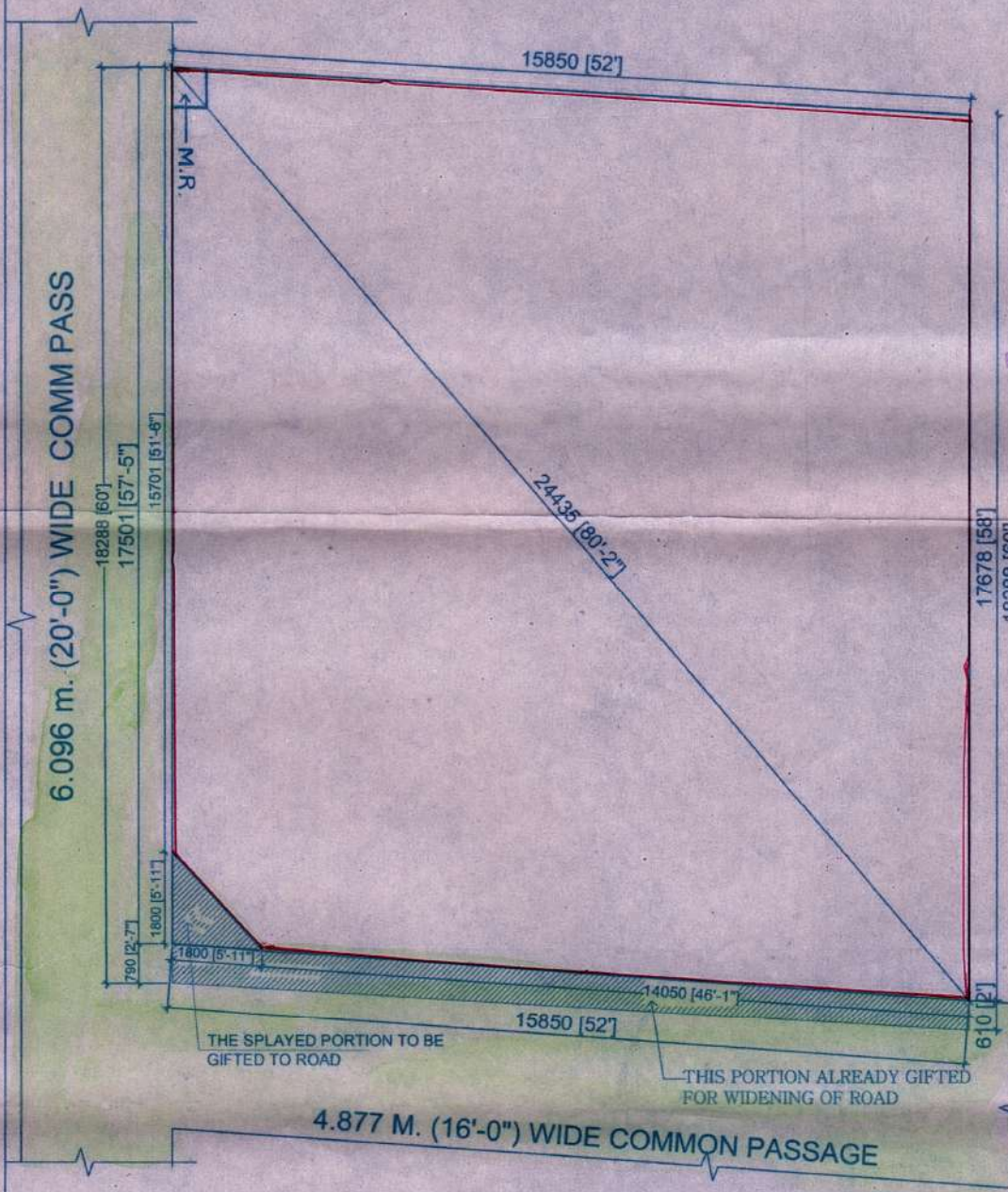
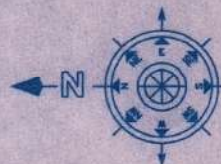
**AT HOLDING NO. 1646 , DHALUA MADHYA , MOUZA- DHALUA,
R.S. DAG NO. 107 (P) , R.S. KHATIAN NO. -188 , J.L.NO. 43 ,
WARD NO.- 02 , P.S. SONARPUR, DIST.- 24 PGS(S) ,
UNDER RAJPUR SONARPUR MUNICIPALTY.**

AREA OF THE LAND = 4 K-5 CH-15 SQFT. = 289.855 SQM. (AS PER DEED)
4 K-2 CH-24 SQFT. = 278.192 (AS PER SITE).

AREA OF LAND GIFTED FOR CORNER SPLAY = 1.615 SQ.M.

NET LAND AREA = 276.577 SQ.M.

SCALE 1:100



THIS LAND IS MEASURED BY ME. ALL ADJACENT ROADS AND MEASUREMENTS ARE MARKED.

Buddhinda Naska
BUDDHISWAR NASKAR
Civil Engineer
E.B.S. Class - I
L.C. No. 519
Rajpur-Sonarpur Municipality

SIGNATURE OF E.B.A.

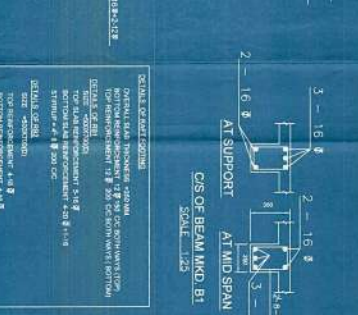
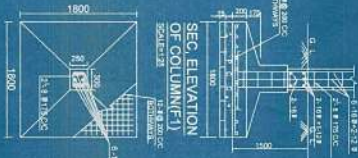
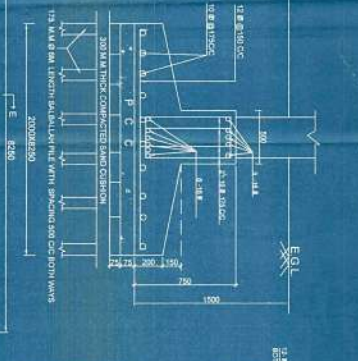
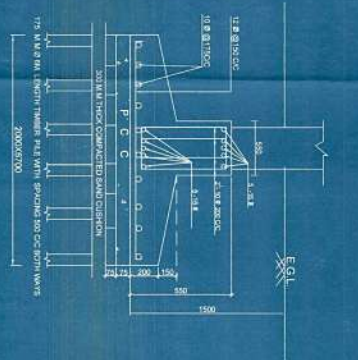
THIS LAND IS NOW IN MY POSSESSION. IT IS FREE FROM ALL ENCUMBRANCE.

ORTEM CREDIT PRIVATE LIMITED
Anand Kumar
Director

SIGNATURE OF OWNER

FOR OFFICE USE

APPROVED
Plan No. *1491/08/02/11*
[Signature] Sub. Assit. Engineer
[Signature] Municipal Engineer
RAJPUR SONARPUR MUNICIPALITY



SECTION OF BEAM MMD B1
SCALE: 1/25

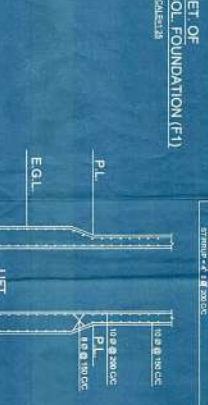
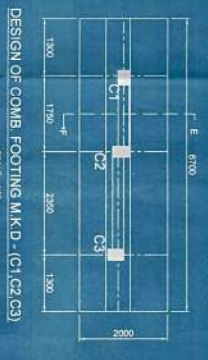
SCHEDULE OF COLUMN

COL. NO.	COL. WIDE	COL. SIZE	COL. STEEL	UPPER REINFORCEMENT	LOWER REINFORCEMENT
1	C1	200X300	4-12 @ 150	2-12 @ 150	2-12 @ 150
2	C2, C3, C4, C5, C6, C7, C8, C9, C10, C11, C12, C13, C14, C15, C16, C17, C18, C19, C20	250X300	4-16 @ 150	2-16 @ 150	2-16 @ 150
3	C15	250X300	4-16 @ 150	2-16 @ 150	2-16 @ 150
4	C16	250X300	4-16 @ 150	2-16 @ 150	2-16 @ 150
5	C17	250X300	4-16 @ 150	2-16 @ 150	2-16 @ 150

SCHEDULE OF BEAM

BEAM NO.	BEAM TYPE	BEAM SIZE	BEAM STEEL	UPPER REINFORCEMENT	LOWER REINFORCEMENT
1	AT SUPPORT	200X300	4-12 @ 150	2-12 @ 150	2-12 @ 150
2	AT MID SPAN	200X300	4-12 @ 150	2-12 @ 150	2-12 @ 150
3	AT SUPPORT	250X300	4-16 @ 150	2-16 @ 150	2-16 @ 150
4	AT MID SPAN	250X300	4-16 @ 150	2-16 @ 150	2-16 @ 150
5	AT SUPPORT	250X300	4-16 @ 150	2-16 @ 150	2-16 @ 150
6	AT MID SPAN	250X300	4-16 @ 150	2-16 @ 150	2-16 @ 150
7	AT SUPPORT	250X300	4-16 @ 150	2-16 @ 150	2-16 @ 150
8	AT MID SPAN	250X300	4-16 @ 150	2-16 @ 150	2-16 @ 150
9	AT SUPPORT	250X300	4-16 @ 150	2-16 @ 150	2-16 @ 150
10	AT MID SPAN	250X300	4-16 @ 150	2-16 @ 150	2-16 @ 150
11	AT SUPPORT	250X300	4-16 @ 150	2-16 @ 150	2-16 @ 150
12	AT MID SPAN	250X300	4-16 @ 150	2-16 @ 150	2-16 @ 150
13	AT SUPPORT	250X300	4-16 @ 150	2-16 @ 150	2-16 @ 150
14	AT MID SPAN	250X300	4-16 @ 150	2-16 @ 150	2-16 @ 150

SCHEDULE OF RAFT FOOTING

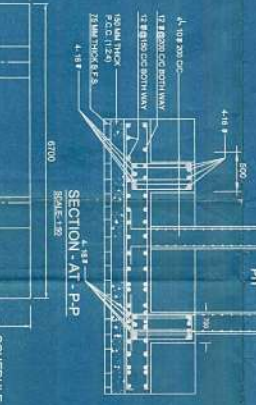
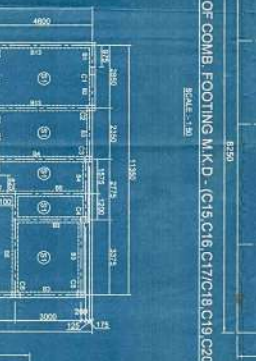
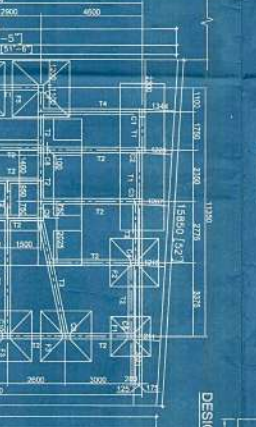


SECTION OF COLUMN (C1)

SCHEDULE OF FOUNDATION

FOOTING NO.	FOOTING SIZE	FOOTING DEPTH	FOOTING REINFORCEMENT
F1	4000 x 1800	200	4-16 @ 150
F2	2200 x 2000	200	4-16 @ 150
F3	2000 x 2000	200	4-16 @ 150
F4	2000 x 2000	200	4-16 @ 150
F5	2000 x 2000	200	4-16 @ 150
F6	2000 x 2000	200	4-16 @ 150
F7	2000 x 2000	200	4-16 @ 150
F8	2000 x 2000	200	4-16 @ 150
F9	2000 x 2000	200	4-16 @ 150
F10	2000 x 2000	200	4-16 @ 150
F11	2000 x 2000	200	4-16 @ 150
F12	2000 x 2000	200	4-16 @ 150
F13	2000 x 2000	200	4-16 @ 150
F14	2000 x 2000	200	4-16 @ 150

SECTION AT P.P

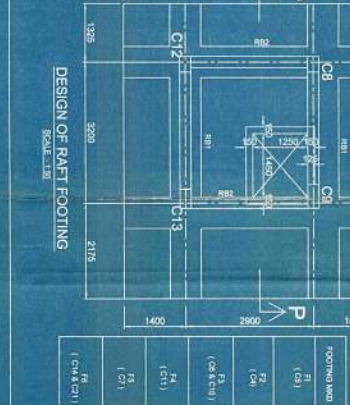
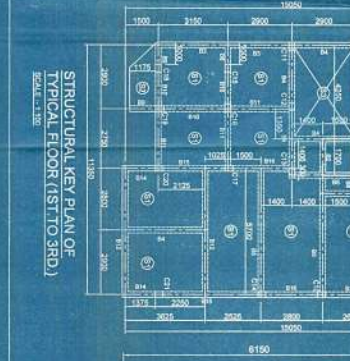
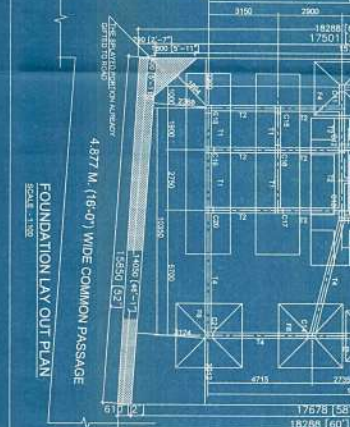


DESIGN OF RAFT FOOTING

SCHEDULE OF FOUNDATION

FOOTING NO.	FOOTING SIZE	FOOTING DEPTH	FOOTING REINFORCEMENT
F1	4000 x 1800	200	4-16 @ 150
F2	2200 x 2000	200	4-16 @ 150
F3	2000 x 2000	200	4-16 @ 150
F4	2000 x 2000	200	4-16 @ 150
F5	2000 x 2000	200	4-16 @ 150
F6	2000 x 2000	200	4-16 @ 150
F7	2000 x 2000	200	4-16 @ 150
F8	2000 x 2000	200	4-16 @ 150
F9	2000 x 2000	200	4-16 @ 150
F10	2000 x 2000	200	4-16 @ 150
F11	2000 x 2000	200	4-16 @ 150
F12	2000 x 2000	200	4-16 @ 150
F13	2000 x 2000	200	4-16 @ 150
F14	2000 x 2000	200	4-16 @ 150

DESIGN OF COMB. FOOTING M.K.D - (C1, C2, C3)



DESIGN OF RAFT FOOTING

SCHEDULE OF FOUNDATION

FOOTING NO.	FOOTING SIZE	FOOTING DEPTH	FOOTING REINFORCEMENT
F1	4000 x 1800	200	4-16 @ 150
F2	2200 x 2000	200	4-16 @ 150
F3	2000 x 2000	200	4-16 @ 150
F4	2000 x 2000	200	4-16 @ 150
F5	2000 x 2000	200	4-16 @ 150
F6	2000 x 2000	200	4-16 @ 150
F7	2000 x 2000	200	4-16 @ 150
F8	2000 x 2000	200	4-16 @ 150
F9	2000 x 2000	200	4-16 @ 150
F10	2000 x 2000	200	4-16 @ 150
F11	2000 x 2000	200	4-16 @ 150
F12	2000 x 2000	200	4-16 @ 150
F13	2000 x 2000	200	4-16 @ 150
F14	2000 x 2000	200	4-16 @ 150

DESIGN OF COMB. FOOTING M.K.D - (C1, C2, C3)



STRUCTURAL DESIGN OF PROPOSED G+11 STORED RESIDENTIAL BUILDING AT HOLDING NO. 1646, DHALLA MADHYA, MOUZADHALLA B.S. DAG NO. 107 (P), K.S. KHATHAN NO. -188, J.L.N.O. 43, WARD NO. -02, P.S. SONARPUR DIST. -21 (P.S.S.), UNDER RAIPUR SONARPUR MUNICIPALITY.

NOTES / SPECIFICATIONS
 1. ALL DIMENSIONS ARE IN MM
 2. GRADE OF CONCRETE IS M20
 3. GRADE OF STEEL IS Fe 415
 4. CLEAR COVER TO CONCRETE
 5. FOR FOUNDATION SLAB - 50 MM
 6. FOR COLUMN - 25 MM
 7. FOR BEAM - 25 MM
 8. FOR RAFT FOOTING - 50 MM

DECLARATION OF L.B.A.A.B.S
 THE ARCHITECTURAL WORKS, IN DESIGN OR DRAWING, DRAWING OR SPECIFICATION, FOR THE PROPOSED BUILDING, HAS BEEN MADE BY ME OR BY THE ARCHITECT, IN THE PRESENCE OF ME AND I HAVE VERIFIED THAT IT IS AS PER THE DRAWING AND SPECIFICATION.

DECLARATION OF OWNER
 I, THE OWNER, HAVE READ AND UNDERSTOOD THE ARCHITECTURAL DRAWING AND SPECIFICATION AND I HAVE VERIFIED THAT IT IS AS PER THE DRAWING AND SPECIFICATION.

DECLARATION OF E.A.
 I, THE ENGINEER, HAVE READ AND UNDERSTOOD THE ARCHITECTURAL DRAWING AND SPECIFICATION AND I HAVE VERIFIED THAT IT IS AS PER THE DRAWING AND SPECIFICATION.

CONTRACTORS
DR. S. K. MOHANTY
 ARCHITECT & ENGINEER
 1/1, BANGALORE ROAD, RAIPUR

OFFICE USE
 APPROVED
 11/11/2023
 ARCHITECT & ENGINEER
 DR. S. K. MOHANTY

PROPOSED G+III STORED RESIDENTIAL BUILDING
 AT HOLDING NO. 1646, DHALUA MADHYA, MOUZA-DHALUA,
 R.S. DAG NO. 107 (P), R.S. KHATHAN NO.-188, J.L.NO. 43,
 WARD NO.-02, P.S. SONARPUR, DIST.-24 PPG(S).
 UNDER RAJPUR SONARPUR MUNICIPALITY.

STATEMENT OF THE PLAN PROPOSAL :-

- AREA OF THE LAND = 4 KGS CHH. ROFT. = 238.25 SQ.M. (AS PER DEED)
 4 KGS CHH. ROFT. = 276.152 SQ.M. (AS PER SITE)
 11/25% TAX AREA = 111.091 SQ.M.
- PERMISSIBLE F.A.R. = 1.75
- PERMISSIBLE GROUND COVERAGE = 67.220% = 160.847 SQ.M.
- PERMISSIBLE BOUND COVERAGE = 69.713% = 168.174 SQ.M.
- PERMISSIBLE TOTAL BUILT UP AREA = 678.120% = 1731 + 73.595 = 1804.715 SQ.M.
- PROPOSED FLOOR AREA = 181.933 SQ.M.
- PROPOSED GROUND FLOOR AREA = 148.156 SQ.M.
 (I) SERVICE AREA & OUT FLOOR = 8.907 SQ.M.
 (II) CAR PARKING AREA = 73.999 SQ.M.
 (III) COMMERCIAL AREA = 48.078 SQ.M.
 (IV) STAIR LIFT AREA (including lift) = 16.888 SQ.M.
- PROPOSED TYPICAL FLOOR AREA (EST. & 2ND F.) = 106.094 SQ.M. (including stair well, lift well)
 PROPOSED THIRD FLOOR AREA = 131.401 SQ.M. (including stair well, lift well)
 PROPOSED TOTAL FLOOR AREA = 611.469 SQ.M.
- PROPOSED AREA DETAILS:

FLOOR	FLOOR STAIRCASE (SQ.M.)	LIFT LOBBY (SQ.M.)	NET FLOOR AREA (SQ.M.)	
GROUND FLOOR	148.156	13.927	2.031	164.114
1ST FLOOR	168.824	13.927	2.031	184.782
2ND FLOOR	166.824	13.927	2.031	182.782
3RD FLOOR	131.401	13.927	2.031	147.359
TOTAL	615.405	53.707	8.124	677.236

- TOTAL AREA = 181.933 SQ.M. (13.927% = 26.660 SQ.M.)
- TOTAL RESIDENTIAL AREA = 247.668 SQ.M. (13.927% = 34.577 SQ.M.) (13.927% = 427.476 SQ.M.)
- NO. OF CAR PARKING SPACE PROPOSED = 31 NOS. (PROVIDED) (COMMON = 148.904 M² AREA) (RESIDENTIAL = 162 NOS.)
- NO. OF OVERHEAD TANKS PROVIDED = 3 NOS. (PROVIDED) (COMMON = 148.904 M² AREA) (RESIDENTIAL = 162 NOS.)
- F.A.R. CONSUMED = 811.052 (678.120/78.932) = 1.140

NOTES / SPECIFICATIONS

- ALL DIMENSIONS ARE IN METERS UNLESS OTHERWISE STATED.
- DEPTH OF FOUNDATION OF SEPTIC TANK SHALL NOT EXCEED THE DEPTH OF SOILS.
- ALL EXTERNAL WALLS ARE 230 MM THICK CONSTRUCTED WITH CEMENT SAND MORTAR 1:3.
- ALL INTERNAL PARTITION WALLS ARE 75 MM THK & 125 MM THK WITH 1:4 CEMENT SAND MORTAR.
- SLABS OF COASTAL 1500 X 3000 OR STEEL FRAMED SLABS WORK AS IS FOR BRICK WORK.
- PLUMBING WORK WITH SAND CEMENT & HYDRA GRADE (1:2:6).
- LIME TREATED WITH LIME SURFA, P. HYDRA GRADE (1:2:7).
- ALL PROPOSED DOORS ARE 50 WIDE.

DECLARATION OF STRUCTURAL ENGINEER

THE STRUCTURAL DESIGN AND DRAWING OF BOTH FOUNDATION AND SUPERSTRUCTURE OF THE BUILDING HAS BEEN MADE BY ME CONSIDERING ALL POSSIBLE LOADS INCLUDING THE SEISMIC LOAD AS PER THE NATIONAL BUILDING CODE OF INDIA AND CERTIFIED THAT IT IS SAFE AND STABLE IN ALL RESPECTS.

DR. MATH DAS
 E.E. Civil Engineer
 P. No. 100/110
 M. No. 9876543210

FOR OFFICE USE

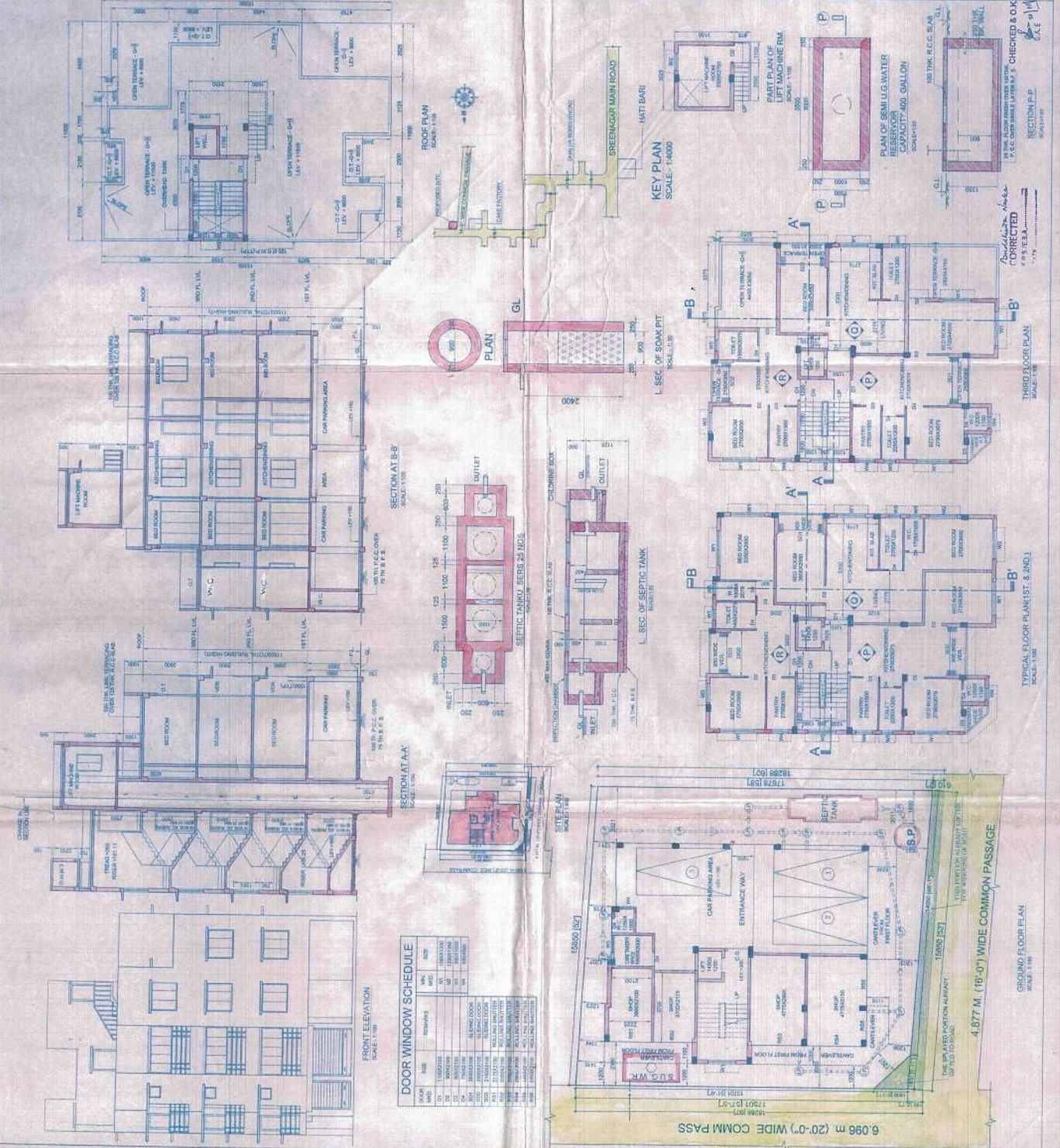
SCALE: 1:100
 1:500
 1:1000
 1:4000

APPROVED
 14/11/2007
 14/11/2007

FOR OFFICE USE

FOR OFFICE USE

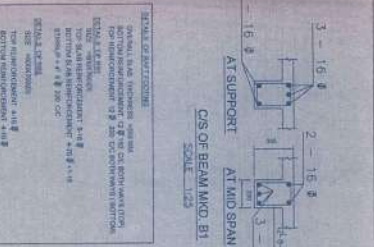
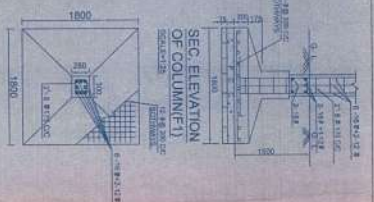
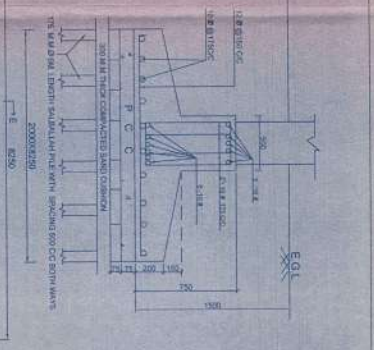
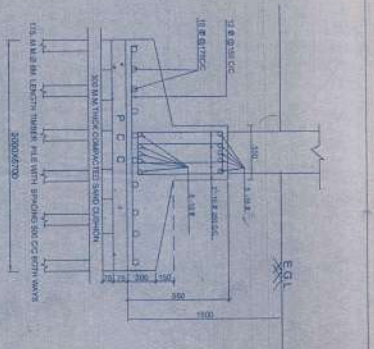
FOR OFFICE USE



FRONT ELEVATION
SCALE: 1:100

DOOR WINDOW SCHEDULE

NO.	TYPE	SIZE	MARK	REMARKS
01	WOODEN	1800 X 2100	W1	FRONT DOOR
02	WOODEN	1800 X 2100	W2	FRONT DOOR
03	WOODEN	1800 X 2100	W3	FRONT DOOR
04	WOODEN	1800 X 2100	W4	FRONT DOOR
05	WOODEN	1800 X 2100	W5	FRONT DOOR
06	WOODEN	1800 X 2100	W6	FRONT DOOR
07	WOODEN	1800 X 2100	W7	FRONT DOOR
08	WOODEN	1800 X 2100	W8	FRONT DOOR
09	WOODEN	1800 X 2100	W9	FRONT DOOR
10	WOODEN	1800 X 2100	W10	FRONT DOOR
11	WOODEN	1800 X 2100	W11	FRONT DOOR
12	WOODEN	1800 X 2100	W12	FRONT DOOR
13	WOODEN	1800 X 2100	W13	FRONT DOOR
14	WOODEN	1800 X 2100	W14	FRONT DOOR
15	WOODEN	1800 X 2100	W15	FRONT DOOR
16	WOODEN	1800 X 2100	W16	FRONT DOOR
17	WOODEN	1800 X 2100	W17	FRONT DOOR
18	WOODEN	1800 X 2100	W18	FRONT DOOR
19	WOODEN	1800 X 2100	W19	FRONT DOOR
20	WOODEN	1800 X 2100	W20	FRONT DOOR

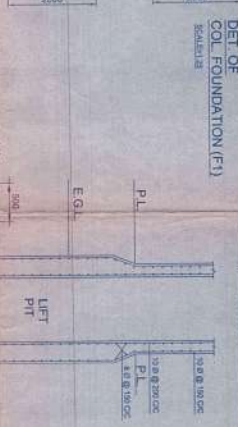
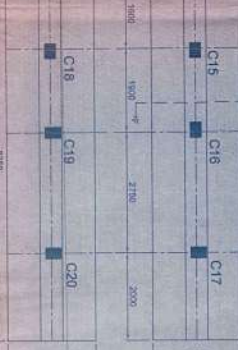


SCHEDULE OF COLUMN

COL. NO.	COL. WID.	COL. HGT.	COL. ELEV.	COL. ELEV.	COL. ELEV.	COL. ELEV.	COL. ELEV.
1	200	200	1.10	1.10	1.10	1.10	1.10
2	200	200	1.10	1.10	1.10	1.10	1.10
3	200	200	1.10	1.10	1.10	1.10	1.10

SCHEDULE OF BEAM

BEAM NO.	BEAM WID.	BEAM HGT.	BEAM ELEV.	BEAM ELEV.	BEAM ELEV.	BEAM ELEV.	BEAM ELEV.
1	200	200	1.10	1.10	1.10	1.10	1.10
2	200	200	1.10	1.10	1.10	1.10	1.10
3	200	200	1.10	1.10	1.10	1.10	1.10

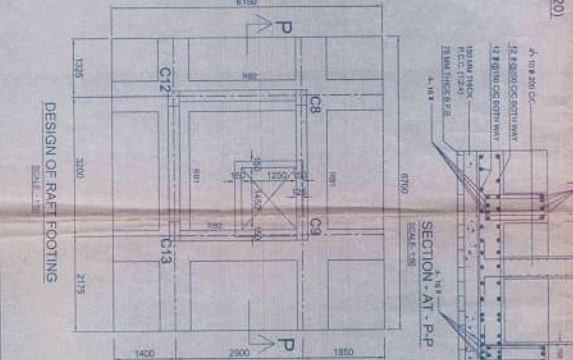
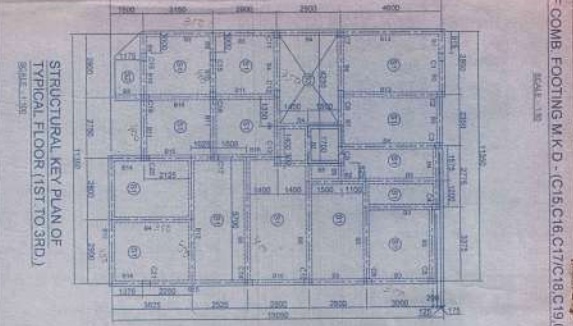
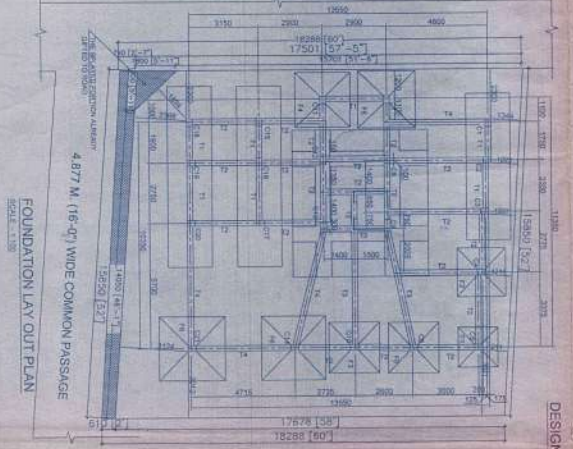


SCHEDULE OF FOUNDATION

FOUND. NO.	FOUND. WID.	FOUND. HGT.	FOUND. ELEV.	FOUND. ELEV.	FOUND. ELEV.	FOUND. ELEV.
1	200	200	1.10	1.10	1.10	1.10
2	200	200	1.10	1.10	1.10	1.10
3	200	200	1.10	1.10	1.10	1.10

NOTES / SPECIFICATIONS

1. ALL DIMENSIONS ARE IN METERS.
2. GRADE OF CONCRETE IS M20.
3. GRADE OF STEEL IS Fe 415.
4. CLEAR COVER TO CONCRETE IS 25 MM.
5. MINIMUM CLEARANCE BETWEEN REINFORCEMENT BARS IS 25 MM.
6. MINIMUM CLEARANCE BETWEEN REINFORCEMENT BARS AND WALL IS 25 MM.
7. MINIMUM CLEARANCE BETWEEN REINFORCEMENT BARS AND COLUMN IS 25 MM.



SCHEDULE OF RAFT FOOTING

RAFT NO.	RAFT WID.	RAFT HGT.	RAFT ELEV.	RAFT ELEV.	RAFT ELEV.	RAFT ELEV.
1	200	200	1.10	1.10	1.10	1.10
2	200	200	1.10	1.10	1.10	1.10
3	200	200	1.10	1.10	1.10	1.10

DECLARATION OF LEAD B.S.

I, the undersigned, hereby declare that the design and construction of the above-mentioned building are in accordance with the provisions of the Building Code of India, 1973, and the rules and regulations made thereunder.

DECLARATION

I, the undersigned, hereby declare that the design and construction of the above-mentioned building are in accordance with the provisions of the Building Code of India, 1973, and the rules and regulations made thereunder.

DECLARATION OF LEAD B.S.

I, the undersigned, hereby declare that the design and construction of the above-mentioned building are in accordance with the provisions of the Building Code of India, 1973, and the rules and regulations made thereunder.

APPROVED

GRAPIC ARCH SERVICES

OFFICE USE